

How Coupa Customers are Spending Smarter Together

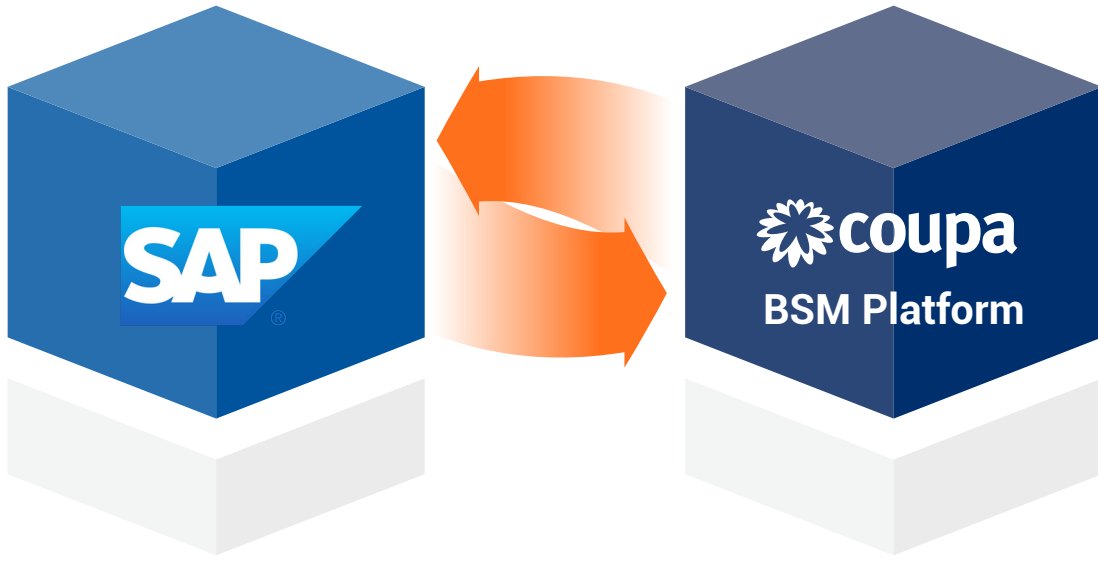


About Cooper Standard:

Industry - Automotive system manufacturing
Location - 21 countries
Employees - 25,000

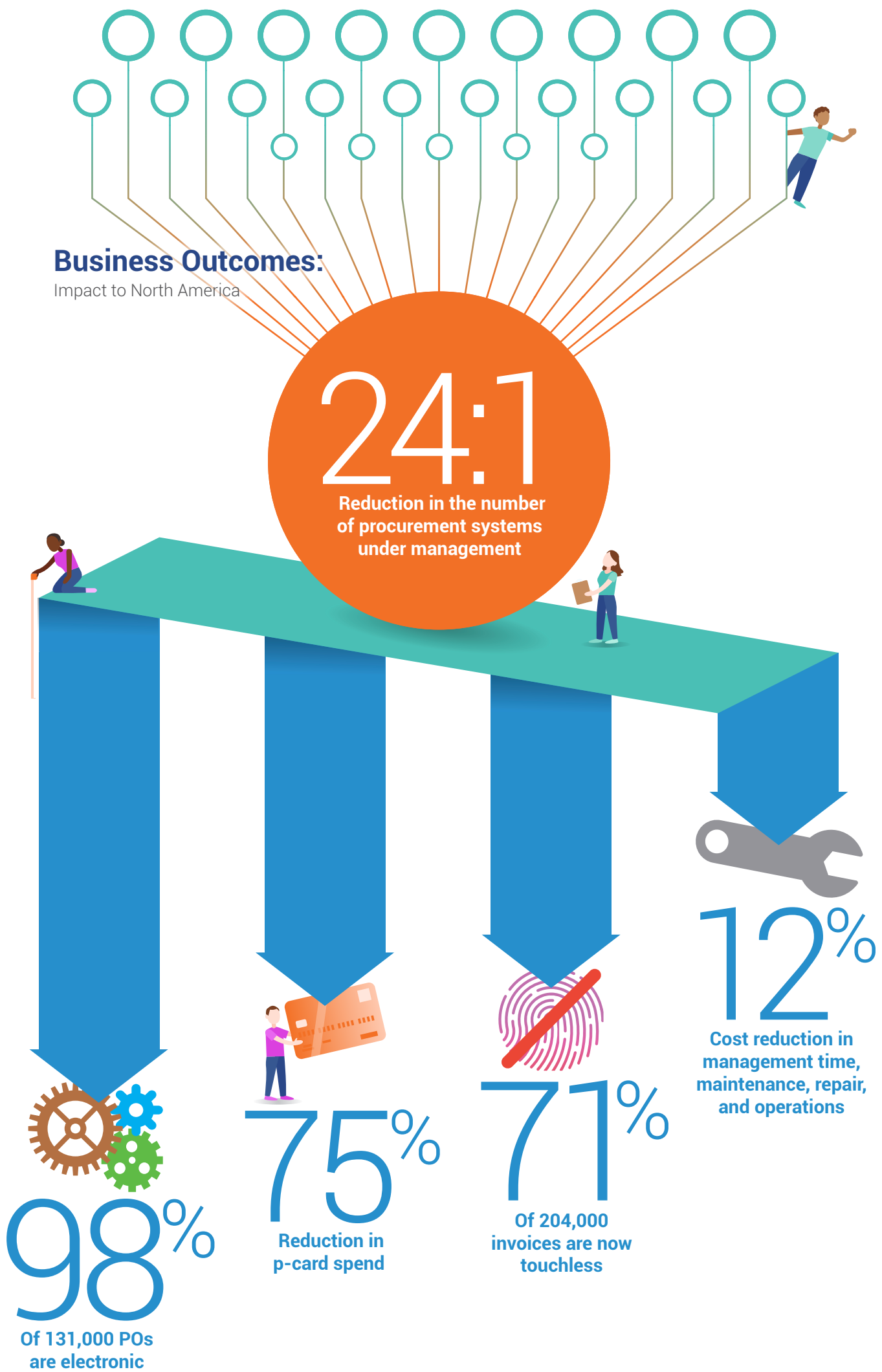
Business Impacts with Coupa:

Cooper Standard selected Coupa for Business Spend Management (BSM) due to its lack of supplier fees, end-to-end process enablement, and ease of use for employees, IT staff, and suppliers alike.



Business Outcomes:

Impact to North America



Solutions:



- Maximize spend under management
- Gain visibility and control
- Maximize user adoption with an intuitive system



- Compliant invoicing in clearance countries
- Digitize invoice billing and processing
- Improve working capital management



- Improve sourcing efficiency
- Maintain competitive intelligence
- Optimize sourcing through e-auctions

Eliminated:



Lack of Visibility



Manual Processes



Spend Management Challenges



Compliance Complications

Evolving with Coupa:

- Transitioned from SAP ECC to S/4HANA in three months
- Integration completed in weeks with only one part-time technical resource
- Migration only required regression testing, not a new build of the integration

"The transition of our ERP back end from SAP ECC to S/4HANA was done with no disruption in the Coupa process, to our operations, and without having to rebuild our existing integrations with Coupa."

— Pierre Choussat, Senior IT Engagement Manager

