

6 Reasons Why Your ERP Falls Short of S2P Capabilities

Discover why relying on traditional ERPs to handle source-to-pay (S2P) processes could be a costly mistake.



1. ERP S2P capabilities are 'adequate' at best

- ERP systems manage direct spend but falter with complex indirect, ad-hoc, and service procurement.
- They rely on add-ons or extensions for comprehensive spend management.
- Fragmented workflows lead to inefficiencies, missed cost-saving opportunities, and blind decision-making.

2. ERP projects lack fast, tangible results

- ERP implementations can take three to four years, delaying measurable results.
- They require millions of dollars and extensive resources for basic functionality.
- Their limited agility prevents response to evolving needs, delaying cost-saving and efficiency improvements.

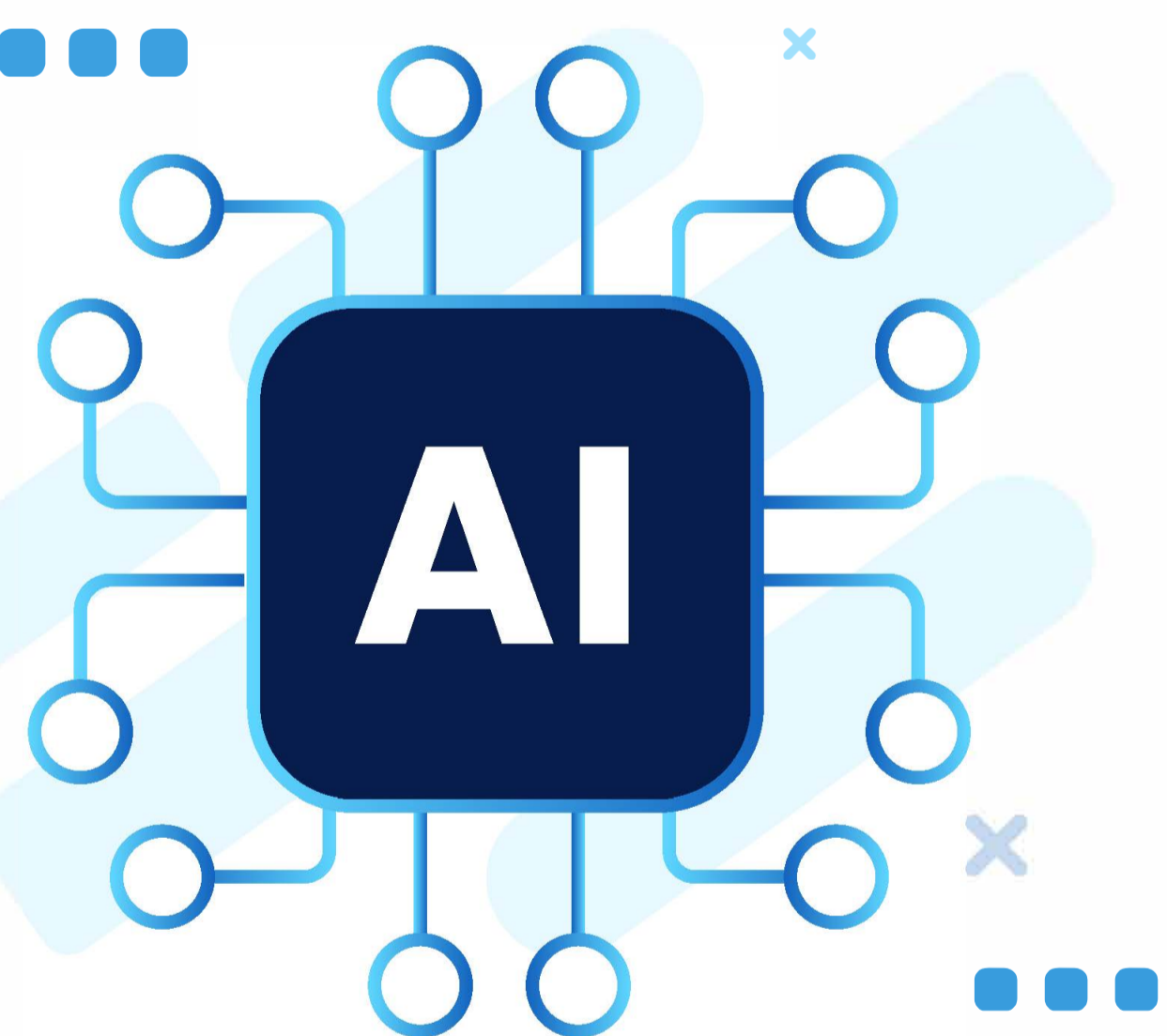


3. ERPs aren't known for being user friendly

- Complex, outdated interfaces frustrate users, causing costly workarounds.
- Low adoption leads to rogue spend and policy non-compliance.
- Dependence on superusers creates bottlenecks, limiting adoption and efficiency.

4. ERP S2P transformations fail to optimize IT costs for profitability

- Legacy ERPs require costly customizations and ongoing maintenance, draining IT budgets.
- Multiple ERP systems often lead to silos, data inconsistencies, and integration challenges.
- High IT involvement diverts resources from other strategic priorities.



5. Limited AI capabilities in ERP systems hinder business efficiency and profitability

- ERP AI lacks domain-specific data for precise, tailored procurement recommendations.
- Siloed data reduces the effectiveness of actionable insights and informed decision-making.
- Rigid ecosystems restrict AI adaptability and integration, limiting real-time insights.

6. ERPs provide limited innovation for the modern enterprise

- Decades-old code limits flexibility, blocking integration with modern technologies and workflows.
- Monolithic architectures restrict efficiency, reducing responsiveness to market demands.
- Fragmented modular solutions create gaps, preventing integration and real-time decision-making.



“What am I going to get incrementally for the [ERP implementation] versus what am I going to get incrementally if I roll out a source-to-pay solution? The delta between the benefits was huge: 80%. That was the value coming out of the source-to-pay solution.”

- Former SVP Chief Procurement Officer



The Solution to a Better S2P Experience

Learn how a best-of-suite S2P platform solves these challenges by driving **significant margin impact**, delivering **faster ROI**, and enabling **strategic innovation** for your organization.

[Download Now](#)